

Construction/Design Process Updates

School Board Meeting - September 22, 2021

North Central High School and Central Campus



North Central / Central Campus

Schedule

NCHS/Central Campus	2021																								2022																											
	April				May				June				July				August				September				October				November				December				January				February				March				April			
	5	12	19	26	3	10	17	24	31	7	14	21	28	5	12	19	26	2	9	16	23	30	6	13	20	27	4	11	18	25	1	8	15	22	29	6	13	20	27	3	10	17	24	31	7	14	21	28	4	11	18	25
PROGRAMMING																																																				
PHASE 1 - AUDITORIUM AND CENTRAL PLANT																																																				
PHASE 2 - WEST GYM/CENTRALIZED BUS STORAGE/TENNIS COURTS/PARKING																																																				
PHASE 3 - MAIN BUILDING																																																				
PHASE 4 - ATHLETIC FIELDS/STADIUM																																																				
PHASE 5 - JEL																																																				
PHASE 6 - OPERATION SERVICE CENTER																																																				

North Central High School Contract Documents August 2021 to May 2022

Schmidt Associates is currently completing Contract Documents for Phase 2 which will continue through October 2021

Central Campus work to
extend through 2026



Forecasted Progress for Next 6 Months:

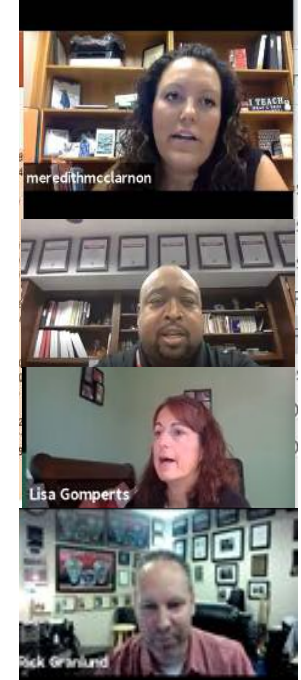
- Bid Phase 2 and Start Construction
- Finish Contract Documents Phases 3



North Central / Central Campus

Process & Engagement Since March 2021

- Regulatory Agencies/Utilities
 - BNS - Drainage Master Plan Discussion/Submittal
 - DMD - SU2 Master Plan Discussion/Submittal
 - DPW - Traffic Signal Discussion
 - IPL - Overhead Power Line Work
 - Citizens - Water/Sanitary Scope Discussions
- Stakeholders
 - Over 25 Coordination meetings with various departments



North Central / Central Campus

Site Design Progress Since March

- **Panther Way Road realignment** - Better separation of buses and cars
- **Primary parent drop off east of High School** - Reworked to increase capacity
- **Second parent drop off south of JEL** - Greater stacking capacity
- **Straighten out South Road** - Provide additional space between Tennis Building and Tennis Courts
- **Band Practice Area** - Moved south of building - Less conflict with car parking
- **Operations Parking** - Refined Vehicle Parking to align with program needs

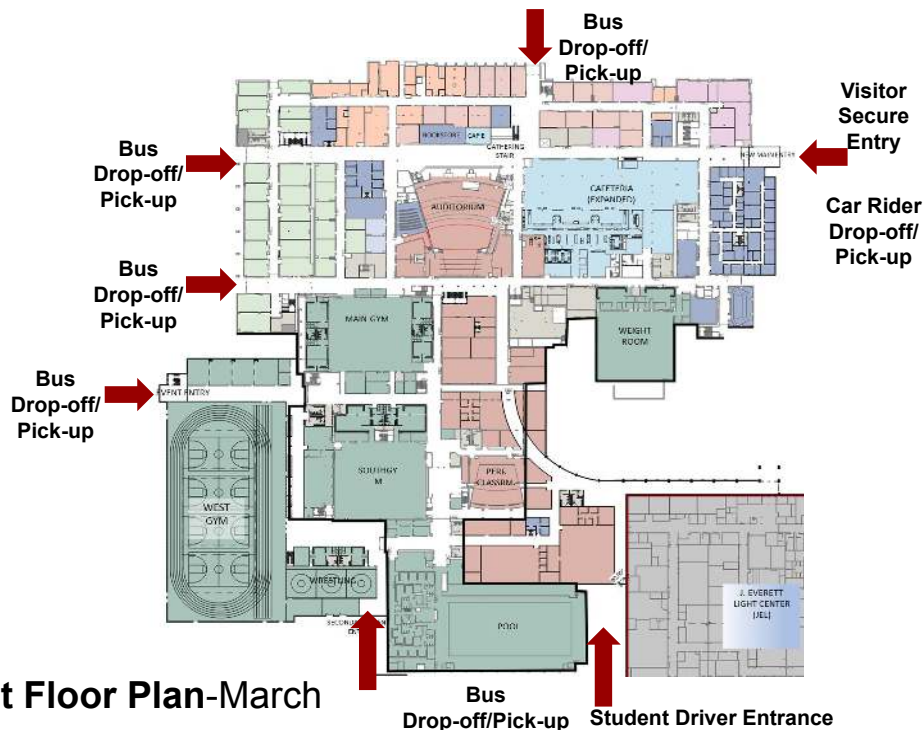


Site Design September 2021

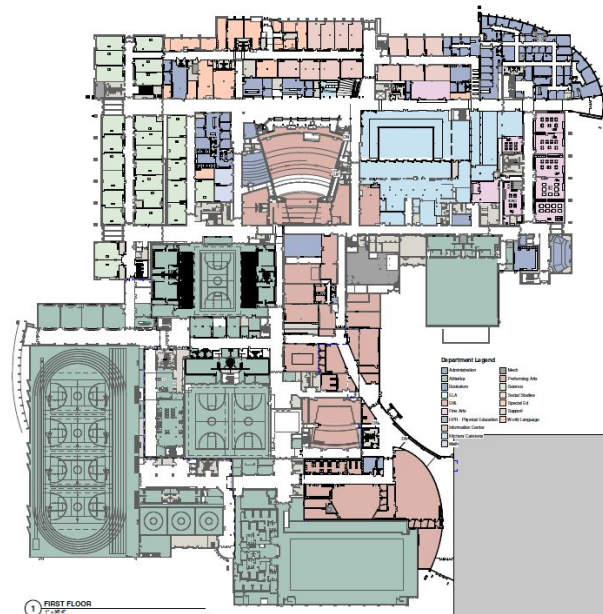
North Central High School

Building Plan Design Progress

- Moved Admin to northeast corner
- Modified JEL connector
- Added canopies to west and south



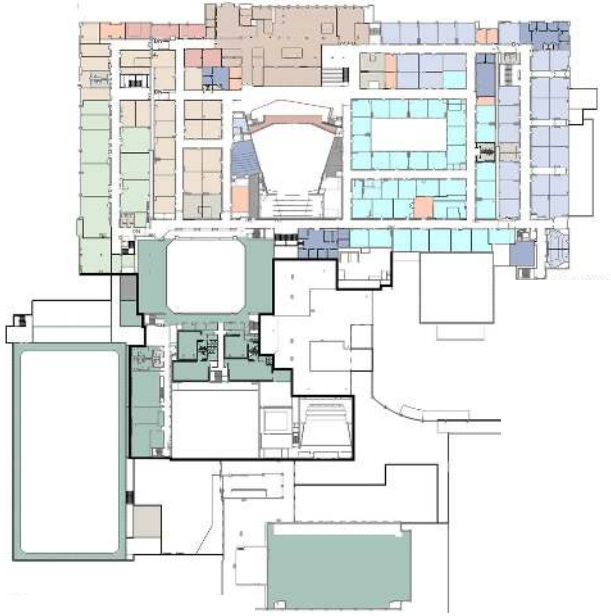
First Floor Plan-March



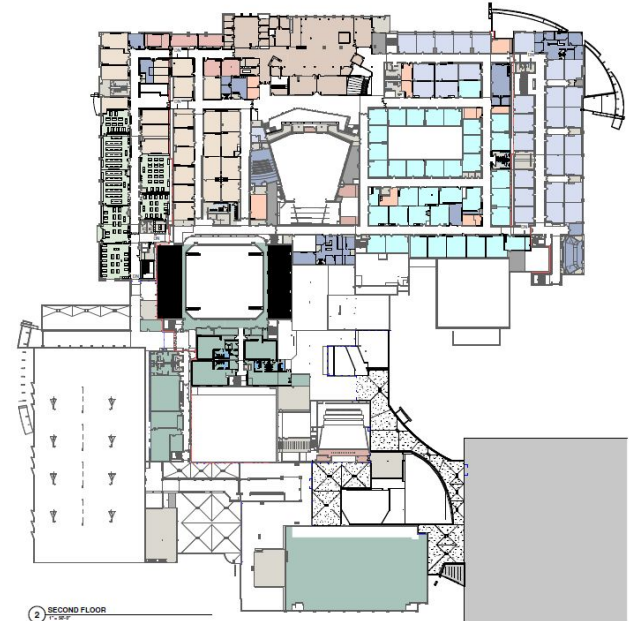
First Floor Plan-September

North Central High School

Building Plan Design Progress



Second Floor Plan - March



Second Floor Plan - September

North Central High School

Phase 1 - Central Plant - Heating and Air Conditioning Upgrades

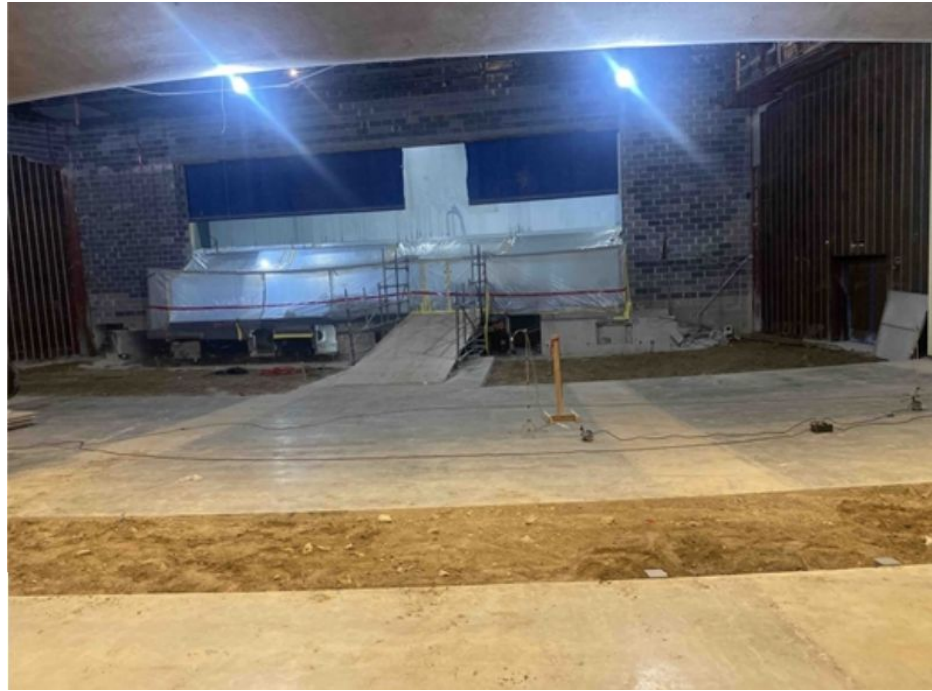


New Water Heater Set

- New 1300 Ton Chiller
- 6 New Cooling Tower Cells
- 2 New Domestic Water Heaters
- 8 New Boilers
- New 2500A Transformer
- Upgraded Controls

North Central High School

Phase 1 - Auditorium Renovations



Demolition Work

North Central High School

Phase 1 - Auditorium Renovations



DRAFT

North Central High School

Phase 2 Graphics - Athletic Entrance (West Side)



North Central High School

Phase 2 Graphics - Athletic Entrance (West Side)



DRAFT

North Central High School

Phase 2 Graphics - West Gym



DRAFT

North Central High School

Phase 3 Graphics - Main Entrance (East Side)



North Central High School

Phase 3 Graphics - Main Entrance (East Side)



North Central High School

Phase 3 Graphics - Student Driver Entrance (South Side)



North Central High School

Phase 3 Graphics - Gathering Stair/Barista



North Central High School

Phase 3 Graphics - Art Classrooms



DRAFT

North Central High School

Phase 3 Graphics - Science Lab

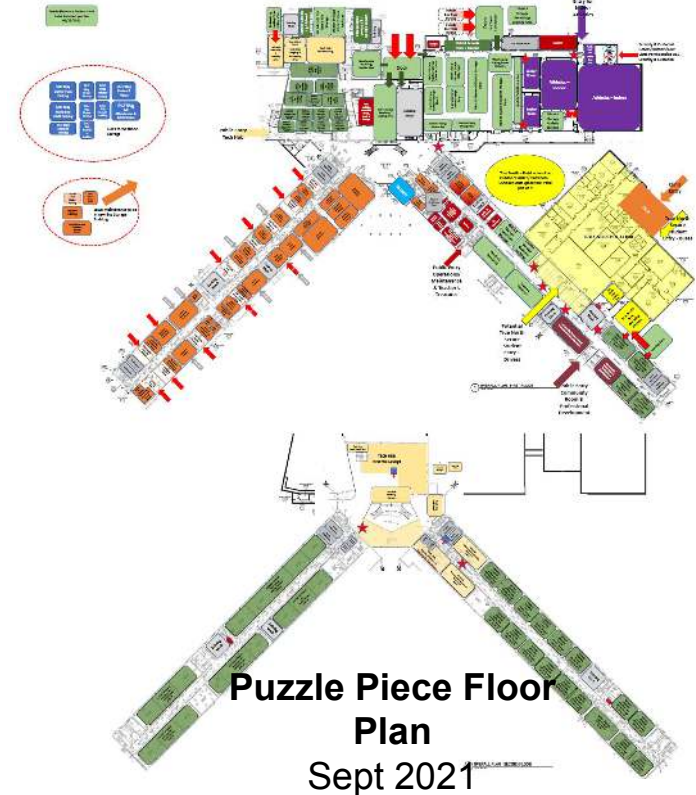


DRAFT

North Central/Central Campus - Operation Service Center



Conceptual Floor Plan
March 2021



DAVIS &
ASSOCIATES, INC. Temporary Facility

Pre-Referendum Community Commitments

North Central High School/Central Campus

Minimize Traffic Impact on surrounding Neighborhoods	✓
Minimize Sound Impact	✓
Address Drainage Issues on South end of Campus	✓
Improve Neighborhood Connectivity	✓
Create Neighborhood Resource Hub (i.e. Meeting Rooms, Activity Spaces, Fields)	✓
Consolidate Transportation and Operation Services (Maint., Security, Technology)	✓

Q&A